

INSIDE-OUT PRISON EXCHANGE PROGRAM



Inside-Out an innovative pedagogical approach to education that brings together college based university students with incarcerated students held in a correctional setting.



**SAMUEL CENTRE
FOR SOCIAL
CONNECTEDNESS**

**Tore Price,
SCSC Fellow 2023**

The Issue:

How does Inside-Out foster a sense of connectedness and belonging and what is the social-ecological impact?



The Goal:

- **Coming to an understanding of the facilitation that brings about connection and belonging.**
- **Determine how the Inside-Out teaching method helps to create belonging.**
- **What role does the student play in creating this brave space.**
- **What is the impact of Inside-Out on personal growth, family and future goals.**

The Process:

5 Focus Groups



40

People interviewed,
including instructors,
inside students, and
outside students

22 One on one
interviews

5 Countries



20 Colleges
and
Universities



The Community is Saying...

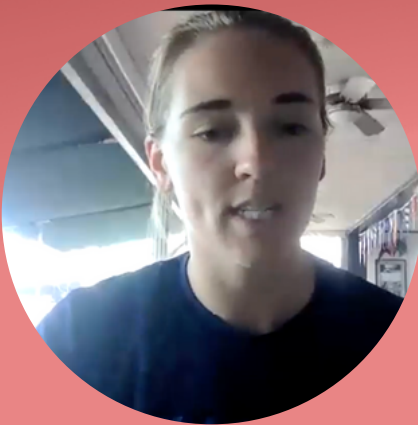
"The Inside-Out model incites the classmates to share, which creates belonging."-**Inside Student**



"The facilitator was really important for setting the tone. I felt empowered."-**Outside Student**



"The circle reduces the dynamic of power"-**Instructor**

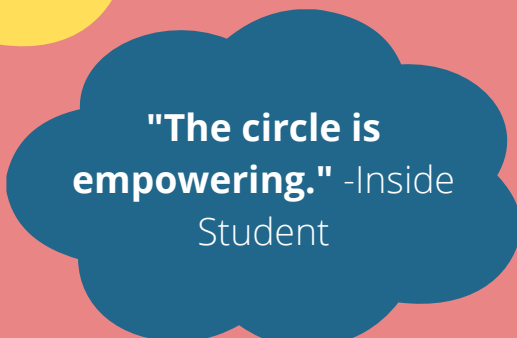


"We had common ground uniting us and a facilitator to lead us"-
Outside Student



"Inside-Out changed the trajectory of my life. I will pursue my masters next year." -Inside Student

"The circle is empowering." -Inside Student



The Impact:

67% of the community felt a sense of belonging and connectedness happens within 1 to 3 classes.

The Inside-Out pedagogical methods (icebreakers, small group discussions, large group discussions, the circle) create inclusion and connection.

The Inside-Out instructor is instrumental in building community and fostering a brave space by modeling behavior.

The social-ecological impact on instructors and students is profound. Upward mobility, healing and restoration, development of soft skills: emotional intelligence, empathy, communication skills and breaking down barriers and stereotypes.



Recommendations:

Develop a system of tracking former inside students who have been released in order to document their success. Inside-Out should track recidivism.

Inside-Out should create a partnership with SCSC to perpetuate social connectedness and belonging.

Use the Inside-Out model to reach more underprivileged populations (i.e. homeless, military veterans, elderly, foster children) to bring a sense of belonging and connection.

Obtain IRB to speak to inside students who are currently incarcerated to determine how taking Inside-Out has affected them from a social-ecological framework.

With success of the Inside-out pedagogy and its ability to create a sense of belonging leading to positive outcomes from a social ecological lens Inside-Out should continue to expand to reach more people worldwide.

The community was asked, "In one word describe Inside-Out?"



**SAMUEL CENTRE
FOR SOCIAL
CONNECTEDNESS**

The Inside-Out Prison Exchange Program®

Social Change Through Transformative Education

